

OUR COMMITMENT
TO CUSTOMER SATISFACTION,
QUALITY, AND SERVICE

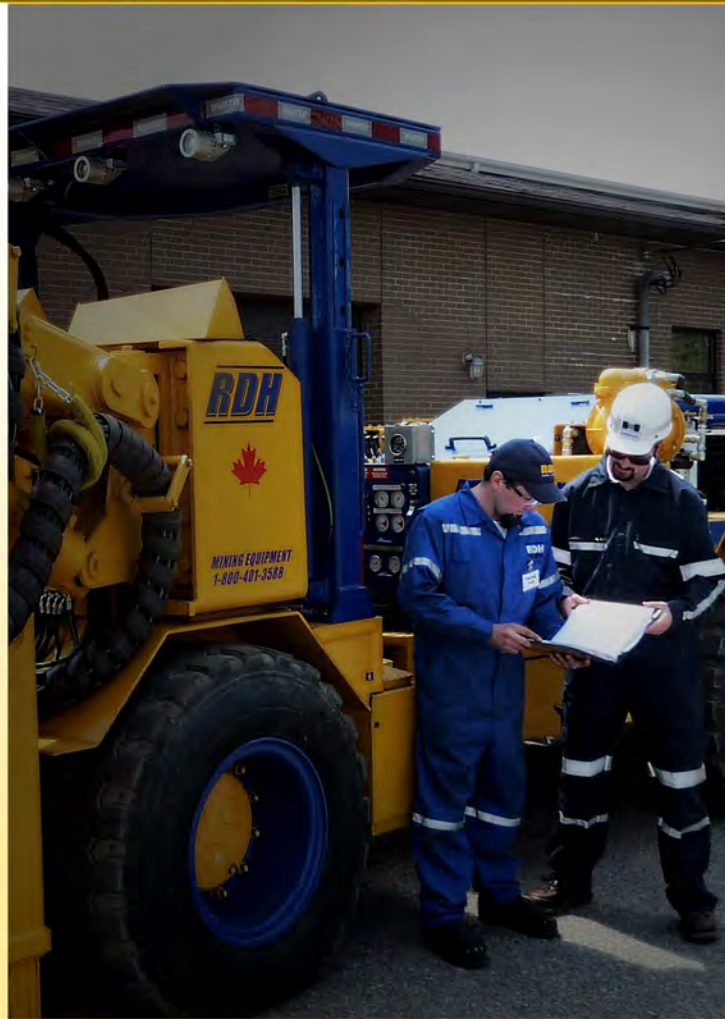
At RDH Mining Equipment we are committed to finding innovative and cost-effective ways of increasing equipment productivity while decreasing equipment costs for our customers.

We incorporate the latest technology to ensure the highest standards are met during every step of the manufacturing process.

We stand behind each of our products and continually enhance our product line with exciting innovations that make our equipment invaluable at customer sites around the world.

Our skilled technical staff ensure our drill rigs are engineered to provide the greatest drilling performance to meet the demands of your tight production schedules.

RDH Mining Equipment aims to enhance customer satisfaction through the continual improvement of our processes and is a ISO 9001 registered organization, consistently providing products that meets our customer and applicable statutory and regulatory requirements.



HAULMASTER 600-4-6

High production, four to six ton haul truck for confined spaces



simplifying heavy equipment



904 Hwy 64 Alban, Ontario
Canada P0M 1A0

1.800.401.3588 toll
705.857.2154 ph
705.857.3265 fax

sales@rdhminingequipment.com
www.rdhminingequipment.com

Body capacities from to 2.02 m³ to 2.64 m³

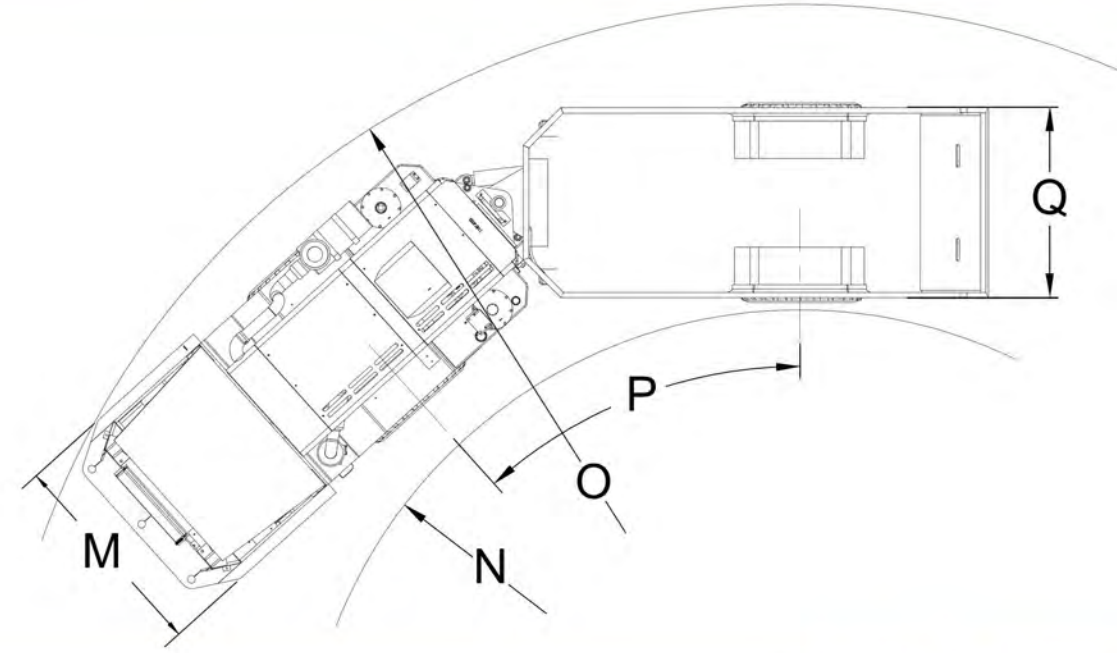
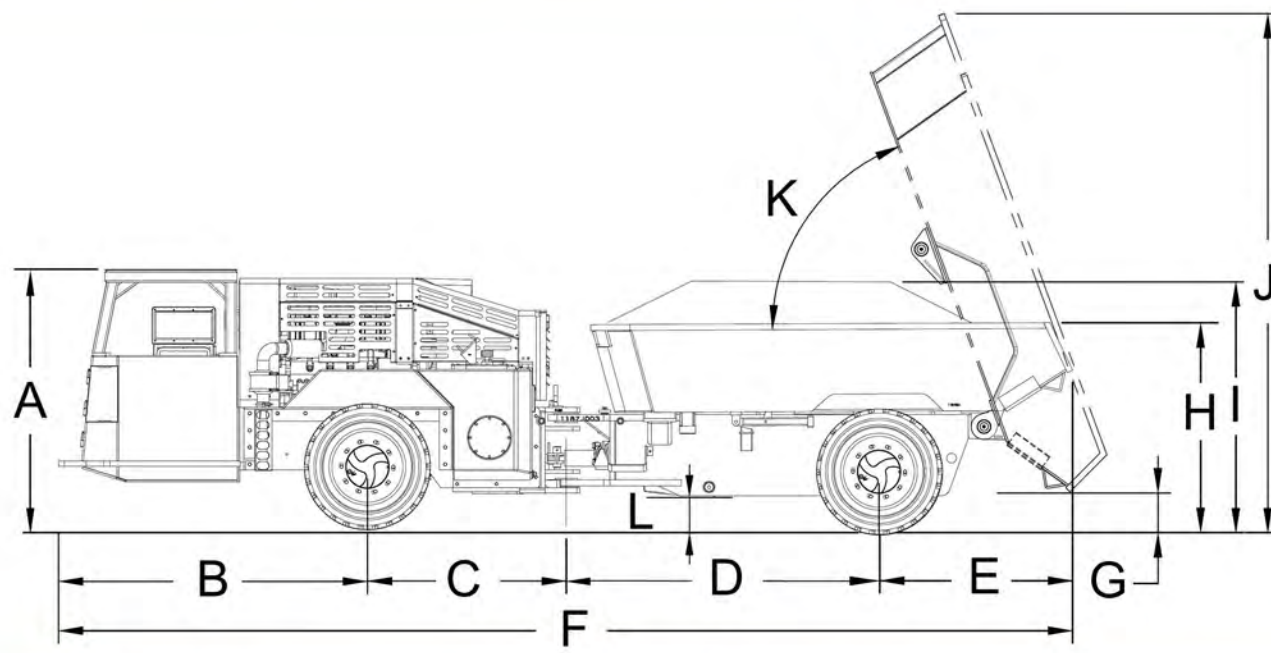
Payload capacity up to 5.4 metric tonnes

Tramming height 1.5 m

Powerful Deutz D914L06 engine



simplifying heavy equipment



All weights, dimensions, and other data reflect a standard unit unless otherwise stated. RDH reserves the right to change this specification without notice.

All weights, dimensions, and other data reflect a standard unit unless otherwise stated. RDH reserves the right to change this specification without notice.

Dimensions

| | 600-4 | | 600-6 | |
|---|---------------------|-----------------------|---------------------|-----------------------|
| | mm | in | mm | in |
| BODY CAPACITY (HEAPED SAE 2:1) | 2.02 m ³ | 2.64 yds ³ | 2.64 m ³ | 3.45 yds ³ |
| NOMINAL PAYLOAD CAPACITY | 5443 kg | 12000 lbs | 5443 kg | 12000 lbs |
| A Height at canopy | 1524 | 60 | 1524 | 60 |
| B Front bumper to centerline of front axle | 1991 | 78 | 1991 | 78 |
| C Centerline of front axle to centerline of midship | 1283 | 50 | 1283 | 50 |
| D Centerline of midship to centerline of rear axle | 2057 | 81 | 2057 | 81 |
| E Centerline of rear axle to end of dump body | 1244 | 49 | 1244 | 49 |
| F Tramming length | 6536 | 257 | 6536 | 257 |
| G Dump clearance | 257 | 10 | 257 | 10 |
| H Height to top of dump body | 1355 | 53 | 1473 | 58 |
| I Height to top of load (SAE 2:1) | 1618 | 64 | 1753 | 69 |
| J Height—body raised | 3346 | 132 | 3391 | 133.5 |
| K Dump angle | 70° | | 70° | |
| L Ground clearance | 296 | 12 | 296 | 12 |
| M Operators compartment width | 1295 | 51 | 1295 | 51 |
| N Inside clearance turning radius | 3321 | 131 | 3321 | 131 |
| O Outside clearance turning radius | 5361 | 211 | 5361 | 211 |
| P Articulation angle | 42° | | 42° | |
| Q Dump body width | 1273 | 50 | 1372 | 54 |
| Tire size | 13.70 x 18 | | 13.70 x 18 | |

Carrier

Powertrain

Engine: Deutz D914L06 six cylinder, air-cooled, diesel, Tier III, c/w fuel filter & water separator
 Power rating at 2300 rpm.....86.5 kW / 116 hp
 Torque at 1500 rpm.....375 Nm / 276.6 lb-ft
 Exhaust.....catalytic purifier with silencer
 Air intakeDonaldson two-stage
 Four wheel drive
 Transmission.....Dana 20000 series, 3 speed forward / reverse
 Axles.....Dana 163
 Service/emergency/parking brakes.....spring applied hydraulically released
 Remote brake release kit for towing

Electrical

Electrical system24 V
 Batteries2 x 12 VDC
 Tramming/working lights.....4 front, 3 rear, LED 27 W
 Horn and reverse alarm

Other Standard Equipment

Central grease point—manual
 Standard gauges and instrumentation
 Ansul fire suppression system —manual, 20 lbs, four nozzle
 Copy Parts/Operators/Service Manuals

HYDRAULIC SYSTEM

- Variable displacement load sensing, closed center system with a piston pump
- Hydraulic pilot operated joystick steer control
- Oil level gauge on oil tank, oil filter indicator

OPTIONAL EQUIPMENT

- Various engine models
- Automatic centralized lubrication system
- Electric oil transfer pump
- ROPS/FOPS approved protective canopy
- ROPS/FOPS approved enclosed cabin
- ANSUL Checkfire fire suppression system
- Fast fill system
- Remote control system
- Reverse camera system
- Fire extinguisher
- Strobe light
- Cold weather package
- Driver door interlock
- Other custom options upon request