

OUR COMMITMENT  
TO CUSTOMER SATISFACTION,  
QUALITY, AND SERVICE

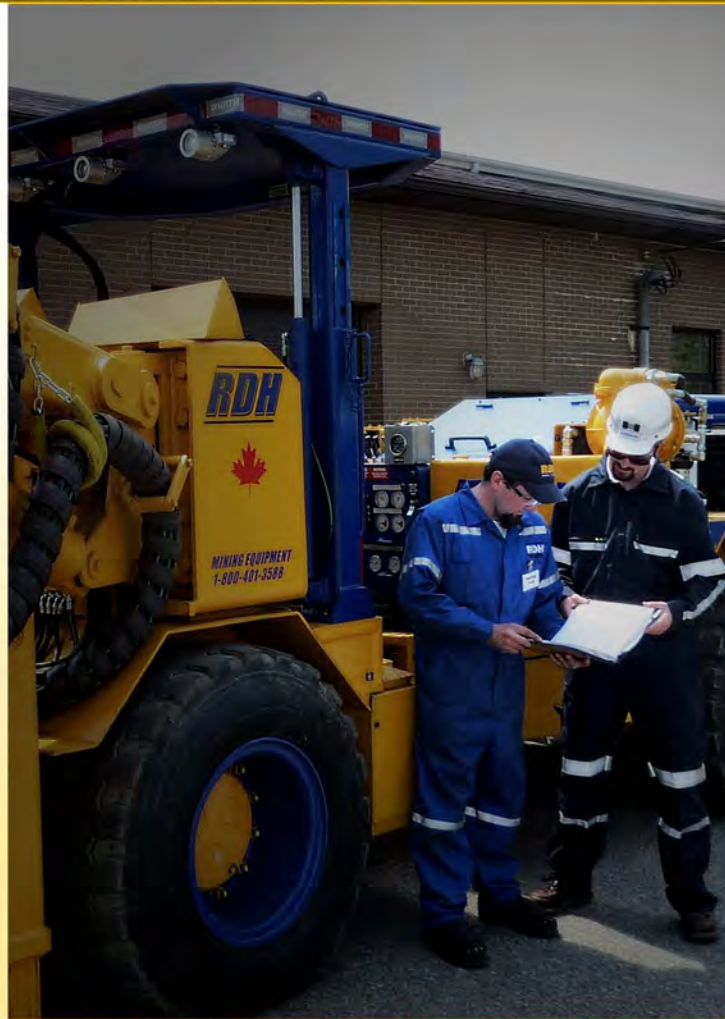
At RDH Mining Equipment we are committed to finding innovative and cost-effective ways of increasing equipment productivity while decreasing equipment costs for our customers.

We incorporate the latest technology to ensure the highest standards are met during every step of the manufacturing process.

We stand behind each of our products and continually enhance our product line with exciting innovations that make our equipment invaluable at customer sites around the world.

Our skilled technical staff ensure our drill rigs are engineered to provide the greatest drilling performance to meet the demands of your tight production schedules.

RDH Mining Equipment aims to enhance customer satisfaction through the continual improvement of our processes and is a ISO 9001 registered organization, consistently providing products that meets our customer and applicable statutory and regulatory requirements.



*simplifying heavy equipment*



904 Hwy 64 Alban, Ontario  
Canada P0M 1A0

1.800.401.3588 toll  
705.857.2154 ph  
705.857.3265 fax

sales@rdhminingequipment.com  
www.rdhminingequipment.com

# LIFTMASTER 600M

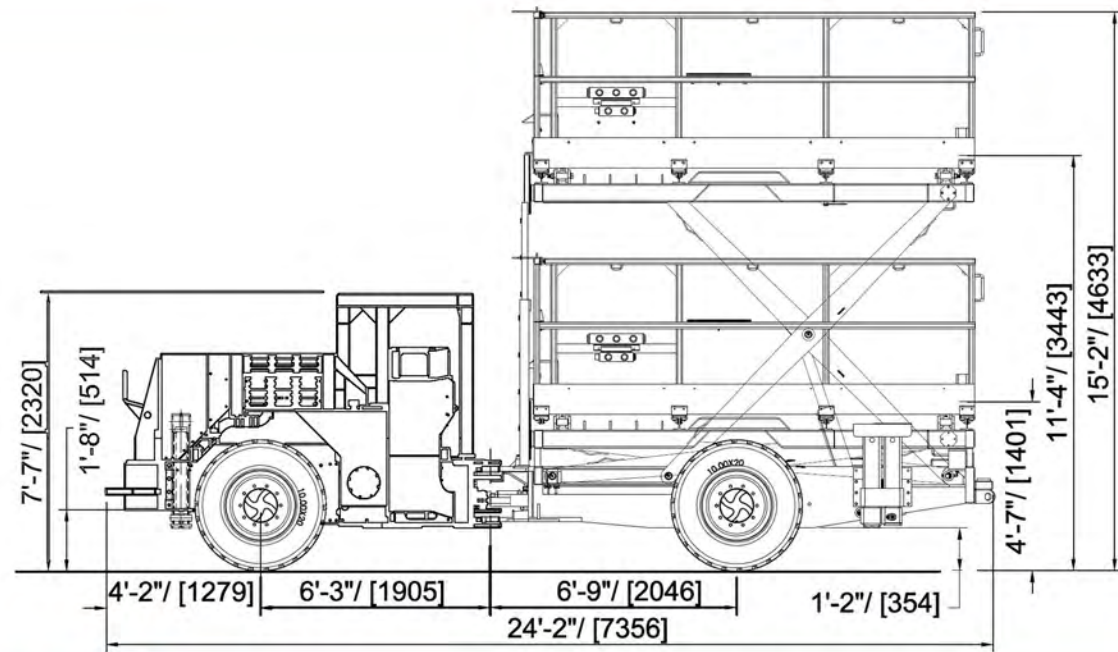
Proven, safe, and reliable scissor-lift truck for mine maintenance



Designed for tunnel headings up to 6 m  
2.7 metric tonne (6000 lbs) payload  
Tramming height 2.3 m  
Powerful Deutz D914L06 engine



*simplifying heavy equipment*



## Carrier

### Powertrain

Engine: Deutz D914L06 six cylinder, air-cooled, diesel, Tier III, c/w fuel filter & water separator  
 Power rating at 2300 rpm.....86.5 kW / 116 hp  
 Torque at 1500 rpm.....375 Nm / 276.6 lb-ft  
 Exhaust.....catalytic purifier with silencer  
 Air intake .....Donaldson two-stage  
 Four wheel drive  
 Transmission.....Dana 20000 series, 3 speed forward / reverse  
 Axles.....Dana 113  
 Tires .....10.00 x 20  
 Service/emergency/parking brakes.....spring applied hydraulically released  
 Remote brake release kit for towing

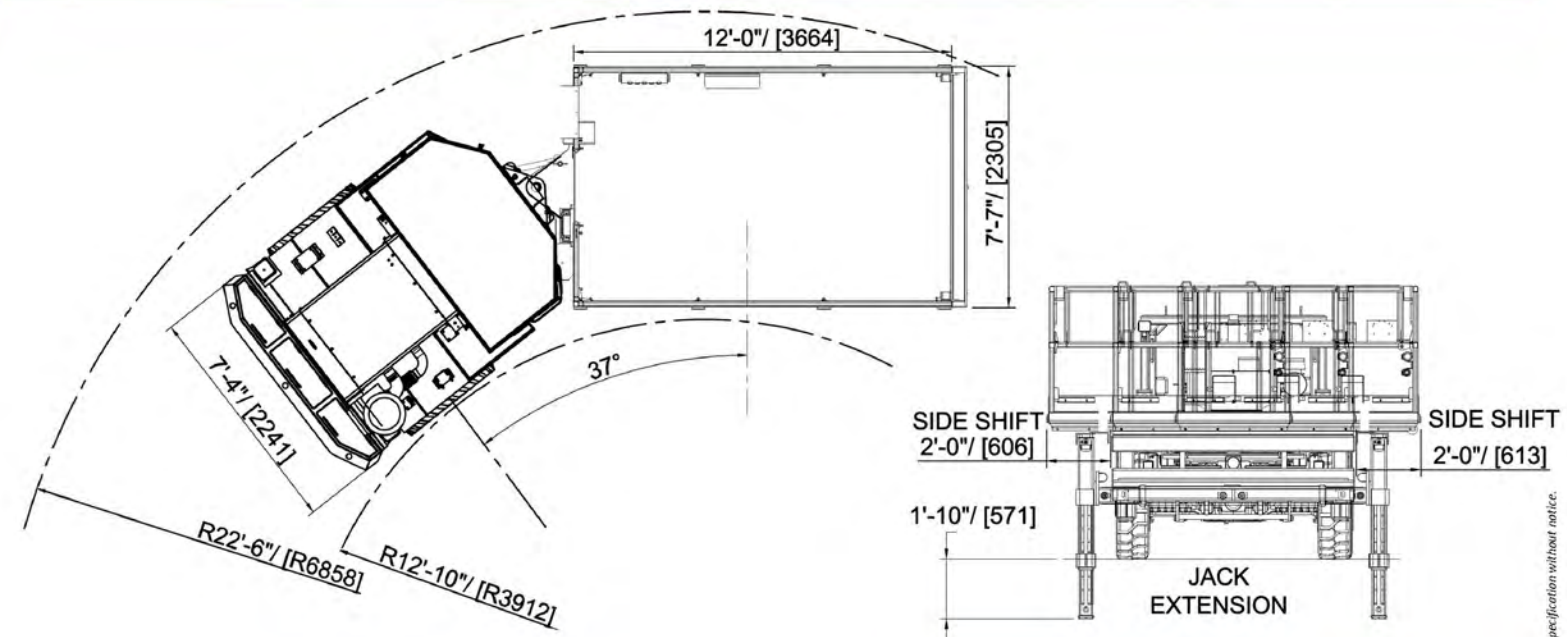
### Electrical

Electrical system .....24 V  
 Batteries .....2 x 12 VDC  
 Trimming/working lights.....4 front, 3 rear, LED 27 W  
 Horn and reverse alarm

### Other Standard Equipment

Passenger seating  
 Fold-down railings  
 Central grease point—manual  
 Standard gauges and instrumentation  
 Ansul fire suppression system — manual, 20 lbs, four nozzle  
 Copy Parts/Operators/Service Manuals

All weights, dimensions, and other data reflect a standard unit unless otherwise stated. RDH reserves the right to change this specification without notice.



### Hydraulic System

Variable displacement load sensing, closed center system with a piston pump  
 Hydraulic pilot operated joystick steer control  
 Oil level gauge on oil tank, oil filter indicator

### Options

Various engine models  
 Side shift platform  
 Extended stabilizers  
 Emergency power pack  
 Automatic centralized lubrication system  
 Electric oil transfer pump  
 ROPS/FOPS approved protective canopy  
 ROPS/FOPS approved enclosed cabin  
 ANSUL Checkfire fire suppression system  
 Fast fill system  
 Fire extinguisher  
 Strobe light  
 Cold weather package  
 Driver door interlock  
 Other custom options upon request

## DIMENSIONS

- Platform length: 3.6 m (144")
- Platform width: 2.3 m (91")
- Side-shift platform coverage: 11.8 m<sup>2</sup> (14.1 yds<sup>2</sup>)
- Total width: 2.3 m (91")
- Total length: 7.36 m (290")
- Trimming height: 2.3 m (91")
- Rear telescopic stabilizers: 925 mm (36") stroke
- Front stabilizers: 762 mm (30") stroke
- Inside turning radius: 3623 mm (143")
- Outside turning radius: 6474 mm (255")
- Steering angle: 37°
- Empty vehicle weight: 15558 kg (34300 lbs)

All weights, dimensions, and other data reflect a standard unit unless otherwise stated. RDH reserves the right to change this specification without notice.