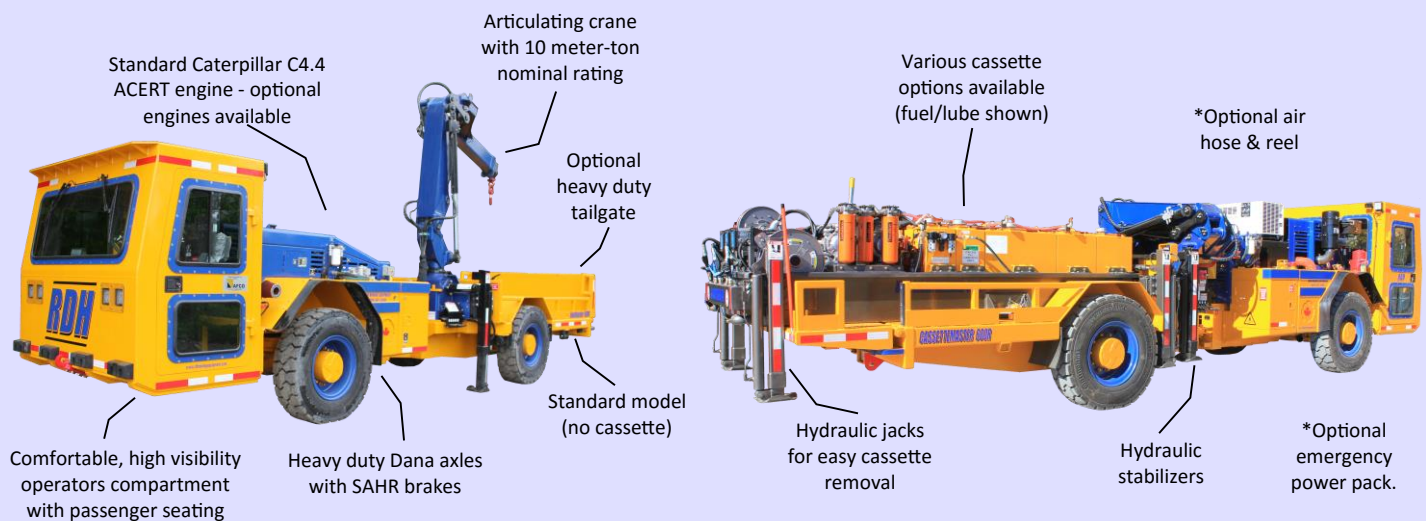


# LOADMASTER 600R

## LM600R FLATBED CRANE VEHICLE - UTILITY

### TECHNICAL SPECIFICATION

**LOADMASTER 600R** is a robust, safe, fast, and reliable flatbed crane vehicle designed for the rapid movement of materials and services in demanding underground applications.



The robust and reliable four-wheel drive, articulated Loadmaster 600R consists of a power-shift transmission powered by a choice of diesel engines connected to heavy-duty Dana axles. The rugged frame and articulated carrier make the Loadmaster 600R a very durable and extremely maneuverable unit even in the tightest situations. Incorporating a reliable and simple mining grade crane, the Loadmaster 600R provides high speed and mobility for the timely delivery and handling of bulk materials in underground mining and tunneling operations.

#### FEATURES:

- 10 meter-ton (72510 lbs) nominal crane rating
- 8 meter (26'-5") vertical reach
- 390° slewing angle
- Crane fatigue/cycle tested to confirm durability
- Dual side controls
- Two post type square stabilizers
- Fine grained, high tensile steels used throughout the crane
- Large welded box sections provide optimum stiffness to weight ratio, ensuring lower deflection for better load control
- Rack and pinion rotation system

*simplifying heavy equipment...*

## SPECIFICATIONS:

### ARTICULATING CRANE

Nominal crane rating	10 meter-ton 72510 ft-lbs
Hydraulic outreach & capacity	
3012 kg @ 3.33 m	(6642 lbs @ 10'-11")
2100 kg @ 4.54 m	(4620 lbs @ 14'-11")
1553 kg @ 5.76 m	(3425 lbs @ 18'-11")
Vertical reach	8052 mm (26'-5")
Crane weight	1465 kg (3230 lbs)
Slewing angle	390°
Stabilizer spread	3.51 m (11'-6")
Stabilizer leg extend	0.61 m (24")
Dual side ground controls	
Rack and pinion rotation system	
Fine grain. high tensile steel, welded box construction	
Crane rating	DIN 15018 H1/B3

### DECK

Area	6.9 m <sup>2</sup> (8.3 yds <sup>2</sup> )
Dimensions tailgate up	2.16 m wide x 2.8 m long (7'-1" wide x 9'-3" long)
Dimensions tailgate down	2.16 m wide x 3.6 m long (7'-1" wide x 11'-10" long)
Side rail height	320 mm (13")

### MISCELLANEOUS

Central grease point – manual
Standard gauges and instrumentation
ANSUL fire suppression system - manual
Copy of Parts/Operator/Service manuals
Passenger seating
Suspension seating (operator/passenger)
ROPS/FOPS certified canopy

### ENGINE

Cat® C4.4 ACERT, inline 4, 4 stroke cycle, diesel	
U.S. EPA Tier 3, EU Stage III A	
Power rating @ 2200 rpm	66-129 kW/88-174hp
Compression Ratio	16.5:1
Displacement	4.4 L (268.5 in³)
Exhaust: catalytic purifier with silencer	
Fuel tank volume	238 L

### TRANSMISSION

Dana powershift, 20000 series
3 speeds forward and reverse
4 wheel drive

### AXLES

Dana 113, planetary type	
Oscillation (rear axle)	$\pm 7^{\circ}$

### BRAKES

Service: wet disc (integrated), internal SAHR
Emergency & parking: SAHR

### TIRES

Mine type, 10.00 – 20
-----------------------

### STEERING

Hydraulic, articulated	
Steering angle	+ 40°

### HYDRAULICS

Steering and crane	
170 bar, 190 L/min/2200 rpm	
Hydraulic oil tank volume	230 L

### ELECTRICAL SYSTEM

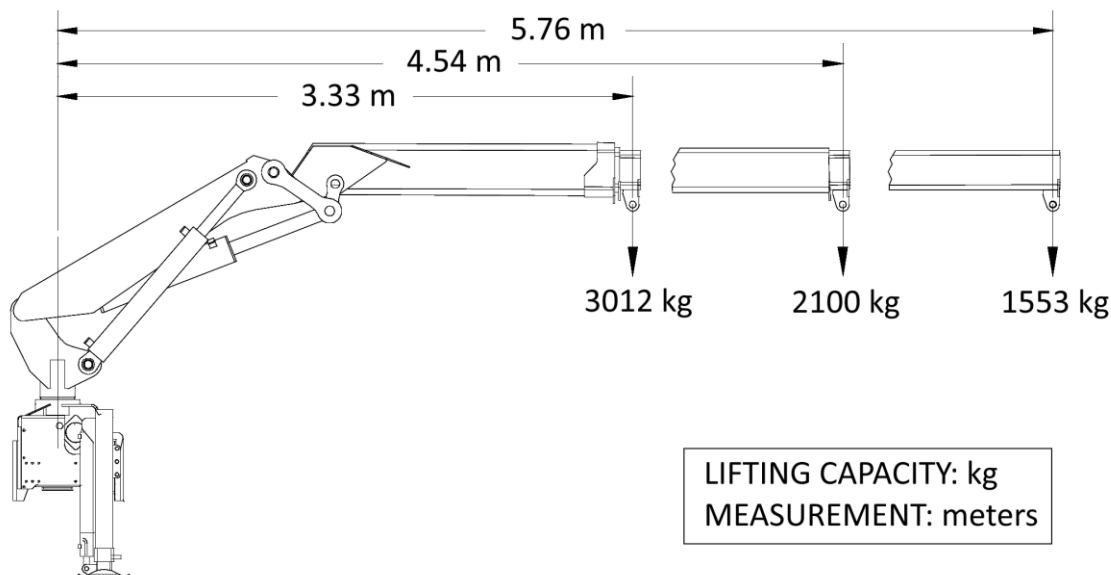
24 V	
Battery	2 x 12 VDC
Tramming/working LED lights	4 front / 4 rear
Brake lights	2 rear
Horn & reverse alarm	

### OPTIONAL EQUIPMENT

Various engine makes/models  
 Automatic centralized lubrication system  
 24 V hydraulic oil transfer pump  
 Fast fill system  
 Cold weather package  
 Strobe light  
 Swivel seat  
 Exhaust system wrap  
 Solid or foam filled tires  
 Manual or hydraulic fold down tailgate  
 Various crane models  
 Power pack

Various cassettes (fuel, service, etc.)  
 Wheel chocks  
 ROPS/FOPS approved enclosed cabin  
 Driver door interlock  
 ANSUL Checkfire fire suppression system  
 Camera system  
 Air ride seating (operator/passenger)  
 Midship or front seated operator cabin  
 Remote brake release for towing  
 Tailgate with boom rest  
 Hydraulic driven air compressor with air hose and reel  
 Other options available upon request

### ARTICULATING CRANE – LIFTING CAPACITIES

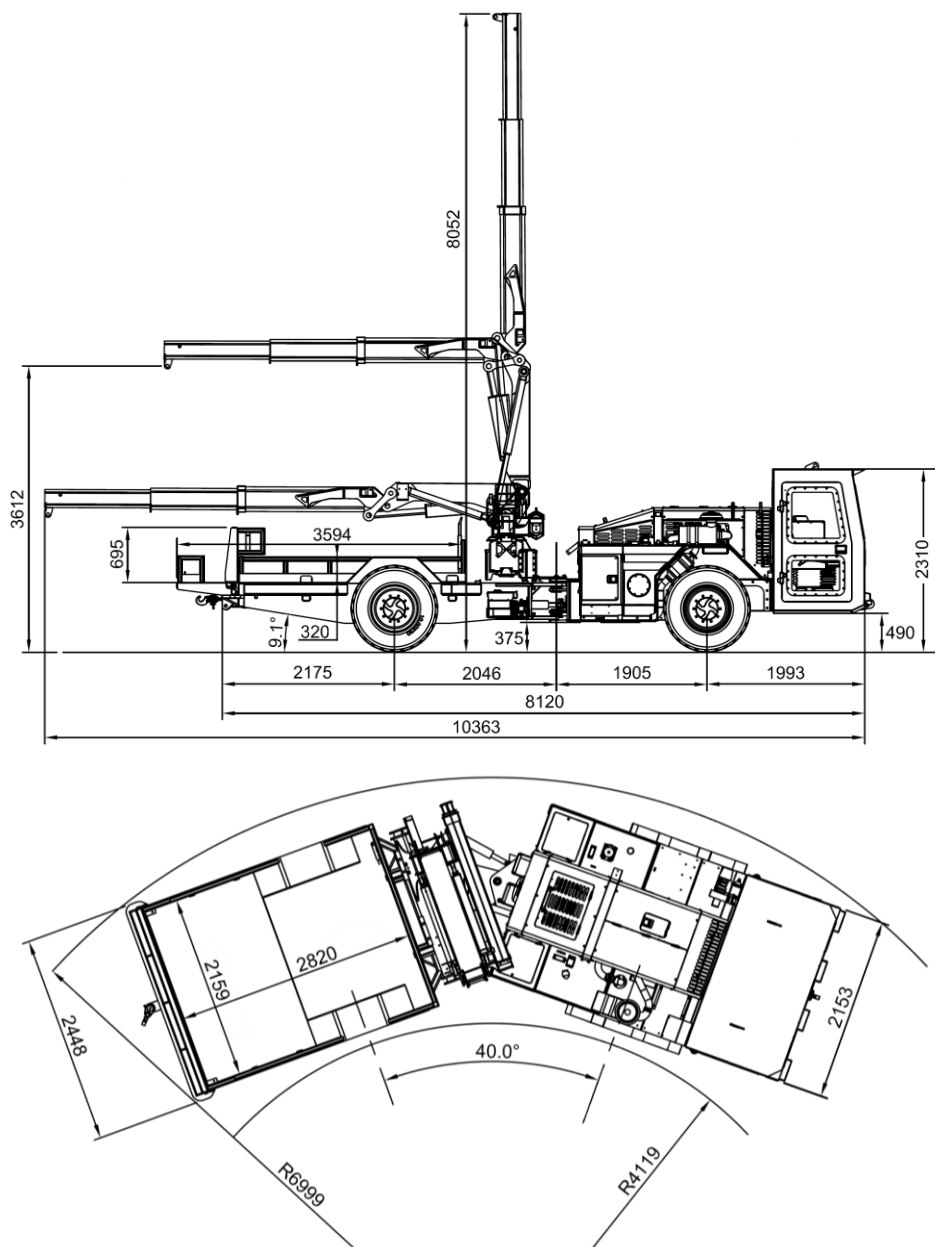


### HYDRAULIC OUTREACH & CAPACITY

Crane Capacity (kg)	@ Crane Outreach (meters)
3012	3.33
2100	4.54
1553	5.76

Crane Capacity (lbs)	@ Crane Outreach (feet)
6642	10'-11"
4620	14'-11"
3425	18'-11"

## MEASUREMENTS



DIMENSIONS	mm	inches	CONT'D	mm	inches
Width	2448	96	Inside turning radius	4119	162
Height –canopy	2310	91	Outside turning radius	6999	276
Ground clearance	375	15	Vertical boom reach	8052	317
Length	8120	320			
<b>WEIGHT</b>					
Total	13886	30619			

*simplifying heavy equipment...*