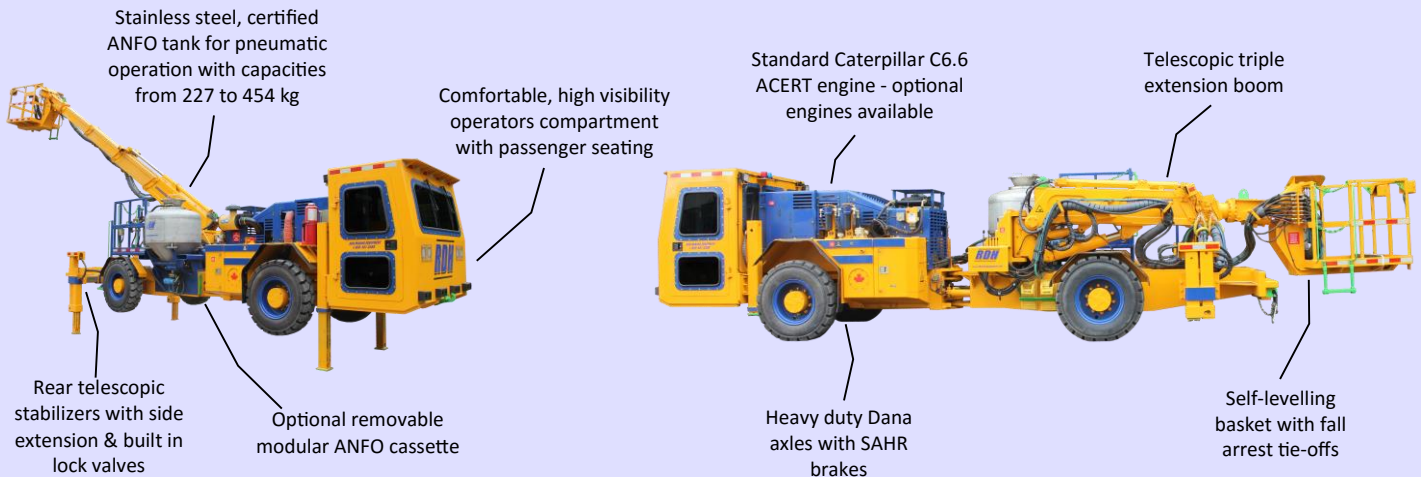


# ANFO MASTER 600R

## ANFO CHARGING EQUIPMENT

### TECHNICAL SPECIFICATION

**ANFO Master 600R** is a robust, compact, diesel-hydraulic, mobile ANFO charging machine, designed for reliable performance in demanding underground applications.



The effective, safe, and reliable ANFO Master 600R is designed to perform explosives charging functions in during face and production charging in underground mining and tunneling operations. The robust and reliable four-wheel drive, articulated ANFO Master 600R consists of a power-shift transmission powered by a choice of diesel engines connected to heavy-duty Dana axles. The rugged frame and articulated carrier make the ANFO Master 600R a very durable and extremely maneuverable unit even in the tightest situations. The ANFO Master 600R provides a mobile and secure working platform to allow a single operator to perform explosive charging operations without having to reposition the machine.

#### FEATURES:

- Compact, triple extension boom
- 227 to 454 kg tank capacities
- Complete drift coverage from single set-up
- Single or dual tank configurations available
- Basket mounted and optional ground controls
- Rear telescopic stabilizers with side extension ensure stability during platform deployment
- Self levelling basket with wide face coverage
- Optional removable ANFO cassette
- On-board air compressor

*simplifying heavy equipment...*

## SPECIFICATIONS:

### ANFO SYSTEM

Stainless steel ANFO vessel  
ANFO vessel capacities 227 kg - 454 kg  
(500 lbs - 1000 lbs)  
Anti-static hose  
Grounding straps – rear and midship  
Mine air and water connections  
On-board, hydraulic driven air compressor  
Air reservoir tank with air-line anti-freeze reservoir  
Remote control from basket  
Non-skid, 3 point contact, access platform for filling  
ANFO vessel

### SERVICE PLATFORM (BASKET)

Self-levelling with built-in lock valves  
Boom controls in basket  
ANFO charging controls in basket  
Maximum lifting height (basket floor) 6.2 m (20.4')  
Basket floor height from ground 902 mm (36")  
Hydraulic boom extension 3988 mm (157")  
Anti-static flooring  
Fire suppression actuator in basket

### STABILIZERS

Stabilizers (2 front, 2 rear)  
Stabilizer leg extend (front) 762 mm (30")  
Stabilizer leg extend (rear) 908 mm (36")  
Stabilizer spread (side extension) 2969 mm (117")

### MISCELLANEOUS

Central grease point – manual  
Standard gauges and instrumentation  
ANSUL fire suppression system - manual  
Copy of Parts/Operator/Service manuals  
ROPS/FOPS certified canopy  
Suspension seating (operator/passenger)

### ENGINE

Cat® C6.6 ACERT, inline 6, 4 stroke cycle, diesel  
U.S. EPA Tier 3, EU Stage III A  
Power rating @ 2200 rpm 158 kW/212 hp  
Compression Ratio 16.5:1  
Displacement 6.6 L (402.8 in³)  
Exhaust: catalytic purifier with silencer  
Fuel tank volume 237.5 L

### TRANSMISSION

Dana powershift, 32000 series  
3 speeds forward and reverse  
4 wheel drive

### AXLES

Dana 113, planetary type  
Oscillation (rear axle)  $\pm 7^\circ$

### BRAKES

Service: wet disc (integrated), internal SAHR  
Emergency & parking: SAHR

### TIRES

Mine type, 10.00 – 20

### STEERING

Hydraulic, articulated  
Steering angle  $\pm 40^\circ$

### HYDRAULICS

Steering and boom  
170 bar, 190 L/min/2200 rpm  
Hydraulic oil tank volume 230 L

### ELECTRICAL SYSTEM

24 V  
Battery 2 x 12 VDC  
Tramming/working LED lights 4 front / 4 rear  
Brake lights  
Horn & reverse alarm



RDH Mining Equipment Ltd.  
904 Hwy. 64, Alban, ON, Canada P0M 1A0  
Tel: 705-857-2154  
[info@rdhminingequipment.com](mailto:info@rdhminingequipment.com)  
[www.rdhminingequipment.com](http://www.rdhminingequipment.com)

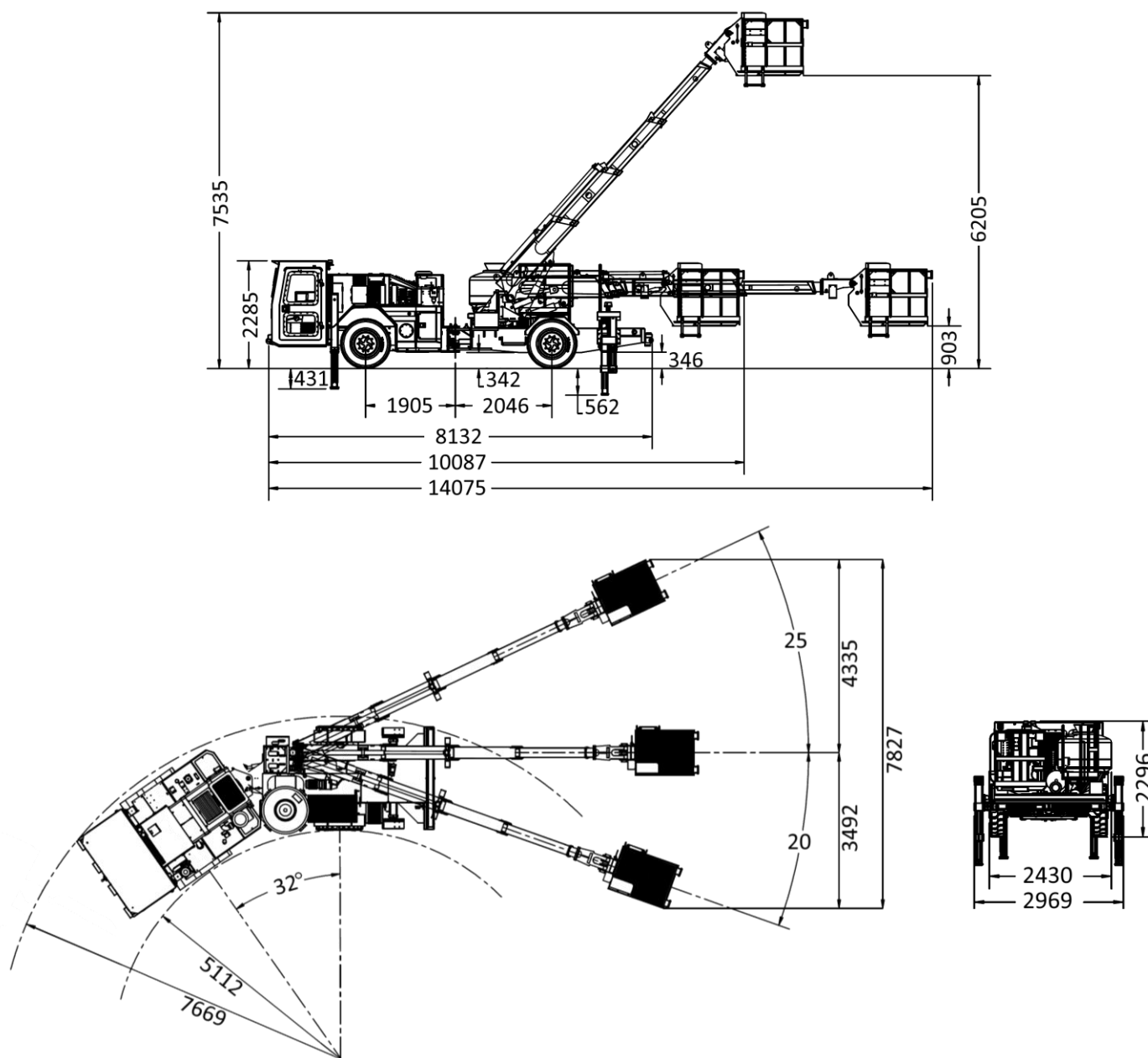
#### OPTIONAL EQUIPMENT

---

Various engine makes/models  
Automatic centralized lubrication system  
24 V hydraulic oil transfer pump  
Fast fill system  
Cold weather package  
Strobe light  
Safety roof for platform (FOPS approved)  
Camera system  
Solid or foam filled tires  
Wheel chocks  
Removable ANFO module (forklift style)  
Other options available upon request

Various ANFO vessel sizes  
Radio remote control  
ROPS/FOPS approved enclosed cabin  
Driver door interlock  
ANSUL Checkfire fire suppression system  
Power pack  
Swivel seat  
Exhaust system wrap  
Air ride seating (operator/passenger)  
Remote brake release for towing  
Midship or front seated operator cabin

## MEASUREMENTS



DIMENSIONS	mm	inches	CONT'D	mm	inches
Width	2430	96	Ground clearance	342	13.5
Height – tramming	2296	90	Height – basket floor lowered	903	36
Height – boom extended	7535	297	Inside turning radius	5113	201
Length	14075	554	Outside turning radius	7669	302
<b>WEIGHT</b>					
	kg	lbs			
Total	16850	37147			

*simplifying heavy equipment...*