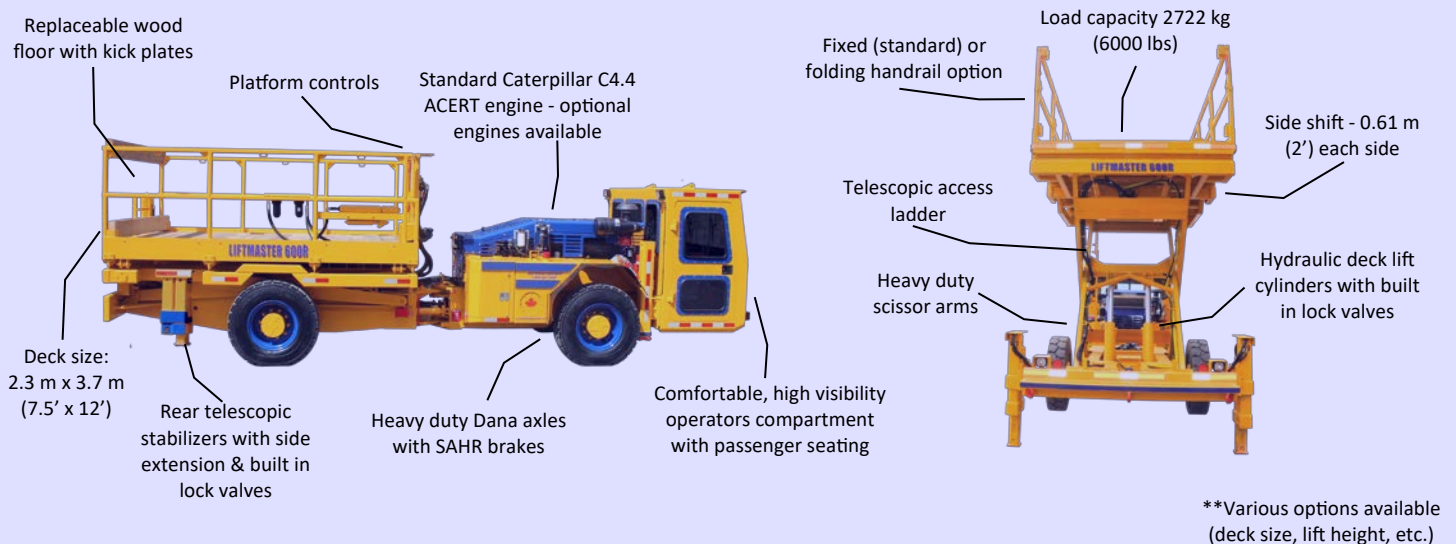


LIFTMASTER 600R is a robust, safe, fast, and reliable scissorlift vehicle designed to provide a safe elevating work platform for various types of installation and maintenance work in demanding underground applications.



The robust and reliable four-wheel drive, articulated Liftmaster 600R consists of a power-shift transmission powered by a choice of diesel engines connected to heavy-duty Dana axles. The rugged frame and articulated carrier make the Liftmaster 600R a very durable and extremely maneuverable unit even in the tightest situations. The Liftmaster 600R provides a mobile and secure working platform for the lifting of personnel and materials in underground mining and tunneling operations and is a necessity when completing maintenance and installation work like piping and ventilation.

FEATURES:

- 2722 kg (6000 lbs) lifting capacity
- 4.1 m (13'-4") extended deck height
- 2.3 m x 3.7 m deck (7.5' x 12')
- Platform with dual side shift for maximum coverage and less set-up time
- Rear telescopic stabilizers with side extension ensure stability during platform deployment
- Replaceable wood lined deck with kick plates
- Two hydraulic lift cylinders with lock valves

SPECIFICATIONS:

LIFTING PLATFORM

Deck dimensions	2286 mm x 3658 mm (7.5' x 12')
Max. deck height (stabilizers ext.)	4075 mm (13'- 4")
Lifting capacity	2722 kg (6000 lbs)
Hydraulic side shift deck (each side)	616 mm (24")
Loading height from ground	1468 mm (58")
Height at top of hand rails	2577 mm (101")
Replaceable wood deck	76 mm (3") thick
Fixed side rail height	1108 mm (44")
Hydraulic deck lift cylinders (2) with built in lock valves	
Telescopic ladder	
Scissor arm lock	
Platform controls	
Certification: CSA Lifting Standard C225-00 for Vehicle Mounted Aerial Devices	

STABILIZERS

Stabilizers (2 front, 2 rear)	
Stabilizer leg extend (front)	762 mm (30")
Stabilizer leg extend (rear)	908 mm (36")
Stabilizer spread (side extension)	2934 mm (9'-7")

MISCELLANEOUS

Central grease point – manual	
Standard gauges and instrumentation	
ANSUL fire suppression system - manual	
Copy of Parts/Operator/Service manuals	
Passenger seating	
Suspension seating (operator/passenger)	
ROPS/FOPS certified canopy	

ENGINE

Cat [®] C4.4 ACERT, inline 4, 4 stroke cycle, diesel	
U.S. EPA Tier 3, EU Stage III A	
Power rating @ 2200 rpm	66-129 kW/88-174hp
Compression Ratio	16.5:1
Displacement	4.4 L (268.5 in ³)
Exhaust: catalytic purifier with silencer	
Fuel tank volume	238 L

TRANSMISSION

Dana powershift, 20000 series	
4 speeds forward and reverse	
4 wheel drive	

AXLES

Dana 113, planetary type	
Oscillation (rear axle)	± 7°

BRAKES

Service: wet disc (integrated), internal SAHR	
Emergency & parking: SAHR	

TIRES

Mine type, 10.00 – 20	
-----------------------	--

STEERING

Hydraulic, articulated	
Steering angle	± 38°

HYDRAULICS

Steering and platform	
170 bar, 190 L/min/2200 rpm	
Hydraulic oil tank volume	230 L

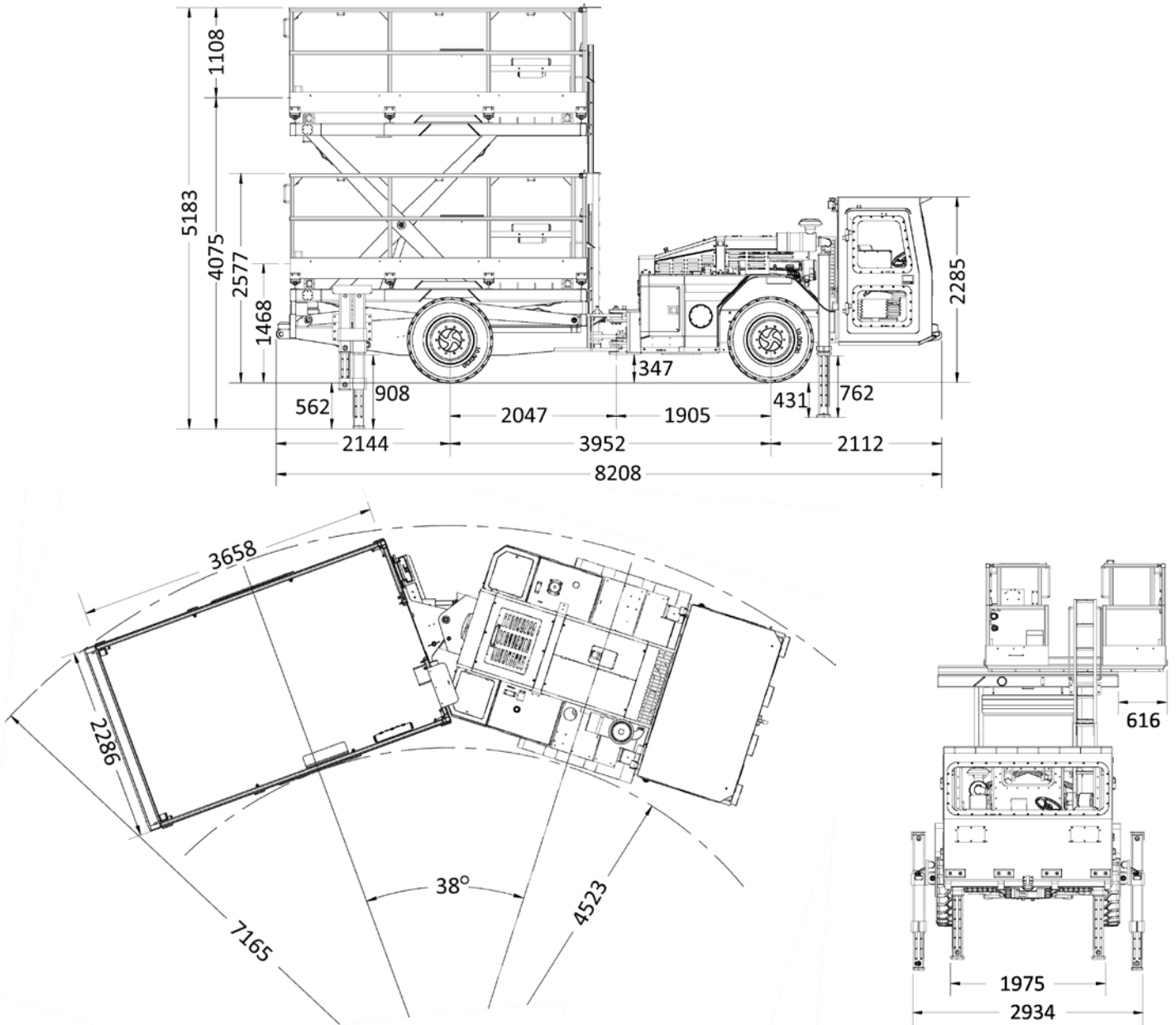
ELECTRICAL SYSTEM

24 V	
Battery	2 x 12 VDC
Tramming/working LED lights	4 front / 4 rear
Brake lights	2 rear
Horn & reverse alarm	

OPTIONAL EQUIPMENT

Various engine makes/models	Folding siderails
Automatic centralized lubrication system	Wheel chocks
24 V hydraulic oil transfer pump	ROPS/FOPS approved enclosed cabin
Fast fill system	Driver door interlock
Cold weather package	ANSUL Checkfire fire suppression system
Strobe light	Camera system
Swivel seat	Air ride seating (operator/passenger)
Exhaust system wrap	Midship or front seated operator cabin
Solid or foam filled tires	Remote brake release for towing
Air and water manifold mounted to platform	Drill steel rack
Telescopic work lights (2) mounted to platform	Extended lift heights
Power pack	Various/custom deck sizes
Sliding safety roof for platform (FOPS approved)	Other options available upon request

MEASUREMENTS



DIMENSIONS	mm	inches	CONT'D	mm	inches
Width	2286	90	Inside turning radius	4523	178
Height – canopy	2285	90	Outside turning radius	7165	282
Height – deck lowered	2577	101	Side shift – each side	616	24
Height – deck raised	5183	204	Width – rear stabilizers ext.	2934	115
Length	8208	323	Ground clearance	347	14
WEIGHT					
	kg	lbs			
Total	16350	36045			

UTILITY

simplifying heavy equipment...